



DSHS Arbovirus Activity Report
Week #39 (ending September 28, 2013)
Report Date: October 1, 2013

Table 1. Arbovirus Reports by Species, Weeks 1-39

Disease	Mosquito			Avian	Equine	Human					TOTAL REPORTS	
	DSHS Lab Reports	Non-DSHS Lab Reports	TOTAL (MOSQUITO)			Febrile Illness	Neurologic Illness	Hemorrhagic Fever	TOTAL (HUMAN)	Deaths		Presumptive Viremic Blood Donors‡
WNV	58	349	407	4	12	34	46		80	4	23	503
SLE			1									1
DEN*						18			18			18
EEE					2							2
WEE												
CE												
TOTAL REPORTS	58	349	408	4	14	52	46	0	98	4		524

WNV - West Nile Virus

SLE - St. Louis Encephalitis Virus

DEN - Dengue

EEE - Equine Encephalitis Virus

WEE - Western Equine Encephalitis Virus

CE - California Serogroup Viruses

*All cases, with the exception of 1, are associated with travel outside of the U.S.

‡Presumptive viremic blood donors (PVDs) are people who had no symptoms at the time of donating blood through a blood collection agency, but whose blood tested positive when screened for the presence of West Nile virus. Unless they meet the case reporting criteria, they are not counted as a case for official reporting purposes and are not included in the "total reports" column.

County	WNV								SLE			DEN**		EEE				WEE				CE		COUNTY TOTAL
	M	A	E	H				M	A	E	M	H	M	A	E	H	M	A	E	H	M	H		
				WNF	WNND	PVD‡	TOTAL																Deaths	
Hutchinson						1																		
Jasper														1									1	
Jefferson				1			1																1	
Johnson				1			1																1	
Lamb				1			1																1	
Lubbock	5			4	1	3	5																10	
Matagorda						1																		
Midland					1		1																1	
Mitchell					1		1																1	
Montgomery	1				2		2				1												4	
Moore					1		1																1	
Nueces					1		1		1		1												3	
Ochiltree						1																		
Parmer				1			1																1	
Potter			1		1	1	1																2	
Randall			1	1	3		4																5	
Runnels					1		1	1															1	
San Jacinto														1									1	
Scurry						1																		
Starr					1		1																1	
Stephens					1		1																1	
Stonewall				1			1																1	
Swisher				2			2																2	
Tarrant	18			1	1		2				2												22	
Taylor	7																						7	
Tom Green			1																				1	
Travis	1										3												4	
Walker					1	1	1																1	
Wichita	2										1												3	
Willbarger											1												1	
Williamson											1												1	
Yoakum				1			1																1	
Total Number of Reports	407	4	12	34	46	23	80	4	1	0	0	0	18	0	0	2	0	0	0	0	0	0	524	

M - mosquito A-avian E-equine H- human

* Total may not equal the sum of the contributing subtotals because some counties will have reports from multiple species and/or for multiple diseases or disease syndromes.

**With the exception of 1 case, all reported cases are imported.

‡Presumptive viremic blood donors (PVDs) are not included in any of the "total columns".

Figure 1. Texas Counties Reporting West Nile Virus Activity, Weeks 1-39

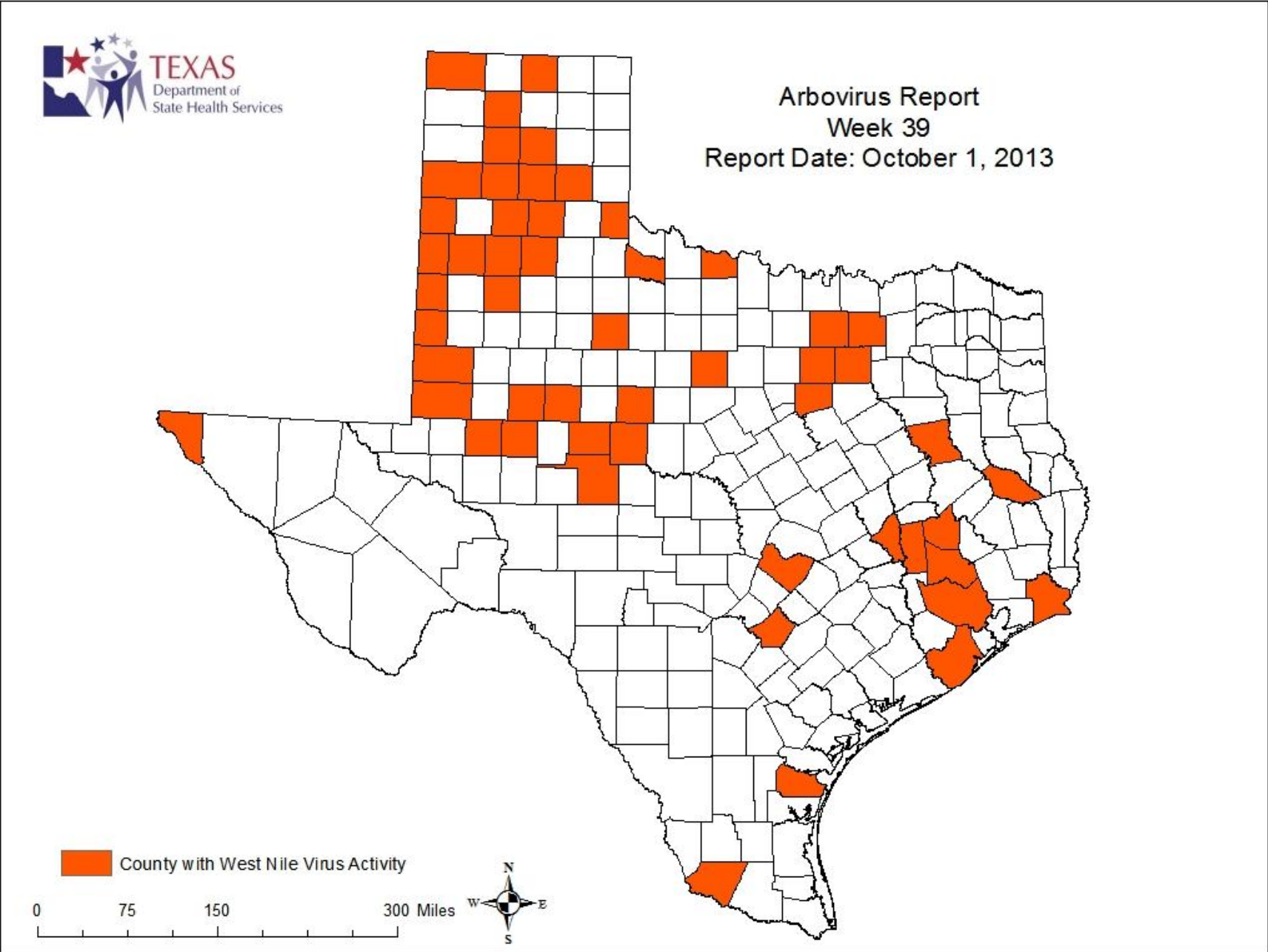


Figure 2. Epidemiologic Curve of Human WNV Activity, 2011-2013

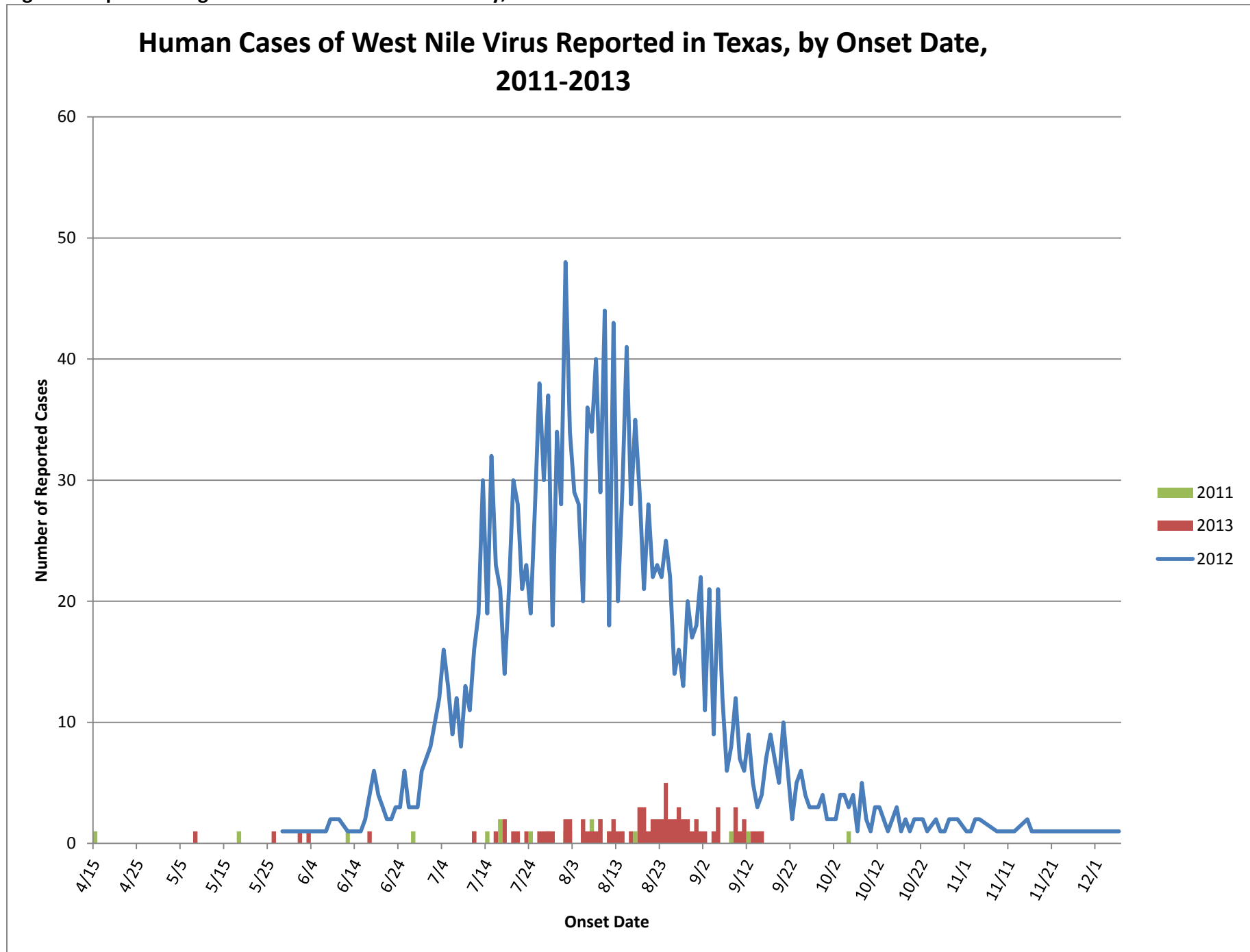
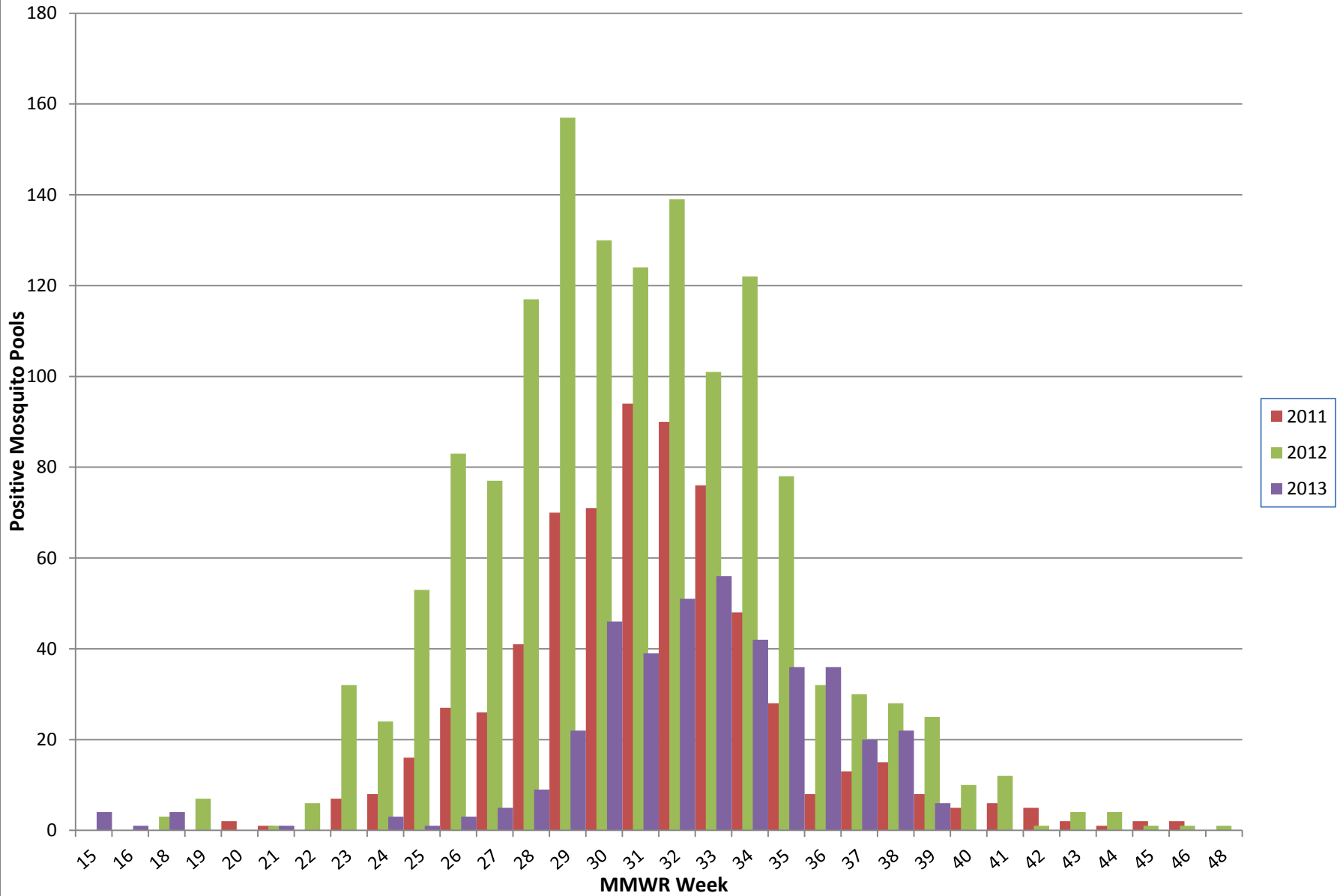


Figure 3. Epidemiologic Curve of Mosquito WNV Activity, 2011-2013

WNV-Positive Mosquito Pools Reported in Texas, by MMWR Week, 2011-2013



For more detailed information about arboviruses found in Texas, please visit <http://www.dshs.state.tx.us/idcu/disease/arboviral/>.